



Torque Controlled Lugs and Connectors for HV Terminations and HV Joints

Torque Controlled Lugs and Connectors for HV Terminations and HV Joints

Features - Benefits



- Torque controlled shear off bolts
- fast and safe installation
 - excellent electrical performance
 - excellent mechanical performance
 - easy installation with socket wrench

Application range

- pre-engineered design for perfect fit
- Cu and Al conductors
- suitable for up to 1600 mm²

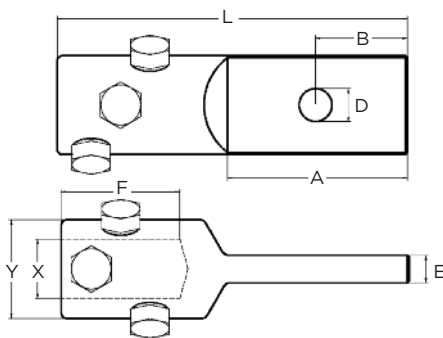
Connectors

- straight and size transition type
- body made of aluminum alloy

Lugs

- variety of different palms available
- body made of tinned aluminum alloy

Cable lug with 1-hole palm (EPPA-052-X/Y)

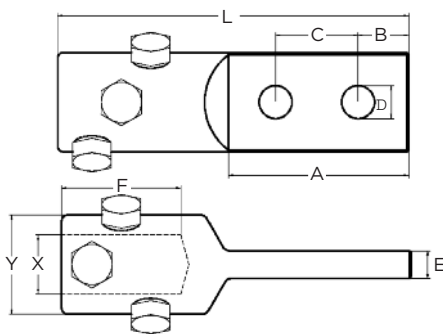


Dimension:

- L = 190 mm D = 18 mm
 A = 100 mm E = 25 mm
 B = 50 mm F = 64 mm

X, Y according to the cable dimensions

Cable lug with 2-hole palm (EPPA-051-X/Y)

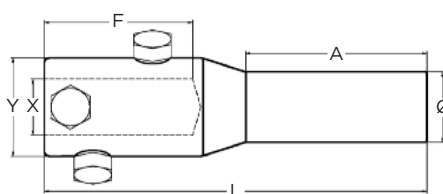


Dimension:

- L = 190 mm D = 18 mm
 A = 100 mm E = 25 mm
 B = 27.5 mm F = 64 mm
 C = 45 mm

X, Y according to the cable dimensions

Cable lug with rod



Dimension:

ROD Ø 30 mm (EPPA-050-X/Y)

- L = 190 mm F = 64 mm
 A = 100 mm Ø = 30 mm

ROD Ø 40 mm (EPPA-053-X/Y)

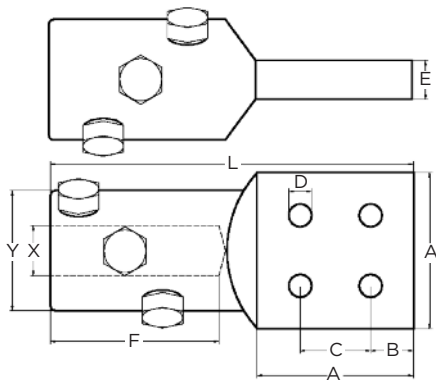
- L = 264 mm F = 106 mm
 A = 125 mm Ø = 40 mm

ROD Ø 50 mm (EPPA-061-X/Y)

- L = 264 mm F = 106 mm
 A = 125 mm Ø = 50 mm

X, Y according to the cable dimensions

Cable lug with 4-hole palm NEMA pad (EPPA-054-X/Y)



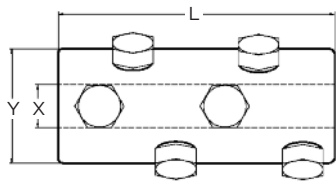
Dimension:

Contact plate 100 mm x 100 mm
 L = 232 mm C = 45 mm
 A = 100 mm D = 14.5 mm
 B = 27.5 mm F = 112 mm
 E = 25 mm

Contact plate 80 mm x 80 mm
 L = 212 mm C = 45 mm
 A = 80 mm D = 14.5 mm
 B = 17.5 mm F = 112 mm
 E = 25 mm

X, Y according to the cable dimensions

Mechanical connector for straight connection (EPPA-047-X/Y-L)

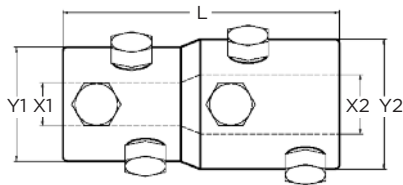


Dimension:

L = 130 mm L = 180 mm

X, Y according to the cable dimensions

Mechanical connector for size transition (EPPA-047-X1/Y1-X2/Y2-L)

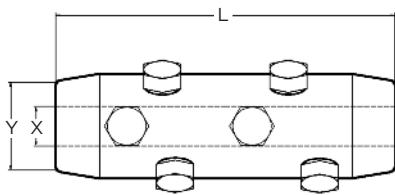


Dimension:

L = 130 mm L = 180 mm

X1/Y1, X2/Y2 according to the cable dimensions

Mechanical connector for cables with small insulation thickness (EPPA-063-X1/Y1-X2/Y2-L)

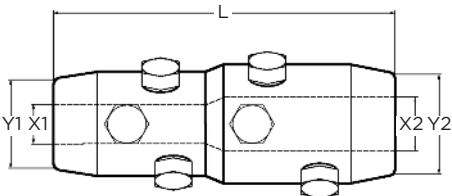


Dimension:

L = 180 mm

L = 230 mm

X1/Y1, X2/Y2 according to the cable dimensions



About TE Connectivity

TE Connectivity is a global, \$14 billion company that designs and manufactures approximately 500,000 products that connect and protect the flow of power and data inside the products that touch every aspect of our lives. Our nearly 100,000 employees partner with customers in virtually every industry – from consumer electronics, energy and healthcare, to automotive, aerospace and communication networks – enabling smarter, faster, better technologies to connect products to possibilities.

More information on TE Connectivity can be found at: www.te.com

While TE Connectivity (TE) has made every reasonable effort to ensure the accuracy of the information in this catalog, TE does not guarantee that it is error-free, nor does TE make any other representation, warranty or guarantee that the information is accurate, correct, reliable or current. TE reserves the right to make any adjustments to the information contained herein at any time without notice. TE expressly disclaims all implied warranties regarding the information contained herein, including, but not limited to, any implied warranties of merchantability or fitness for a particular purpose. The dimensions in this catalog are for reference purposes only and are subject to change without notice. Specifications are subject to change without notice. Consult TE for the latest dimensions and design specifications. Raychem, TE Connectivity and TE Connectivity (logo) are trademarks. Other logos, product and company names mentioned herein may be trademarks of their respective owners.

TE Energy - innovative and economical solutions for the electrical power industry: cable accessories, connectors & fittings, insulators & insulation, surge arresters, switching equipment, lighting controls, power measurement and control.

Tyco Electronics Raychem GmbH
a TE Connectivity Ltd. Company
TE Energy
Finsinger Feld 1
85521 Ottobrunn/Munich, Germany

Phone: +49-89-6089-0
Fax: +49-89-6096345

energy.te.com

