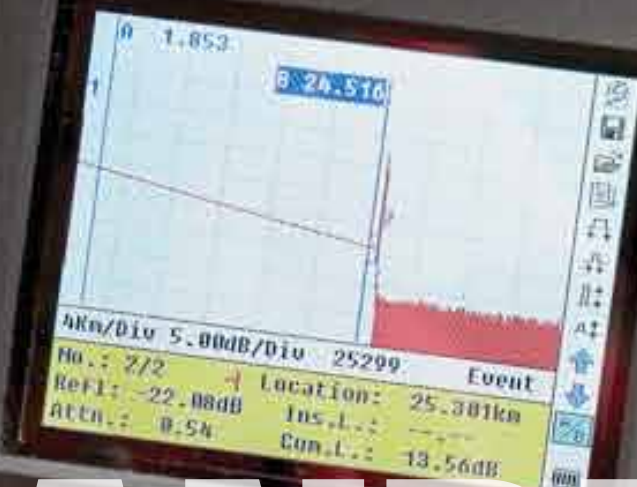




GREENLEE®
COMMUNICATIONS

A Textron Company



HANDHELD SINGLE MODE OTDR

920XC-20C

fiberTOOLS™

920XC



 GREENLEE

MADE FOR THE TRADE!™

920XC Handheld Single Mode OTDR

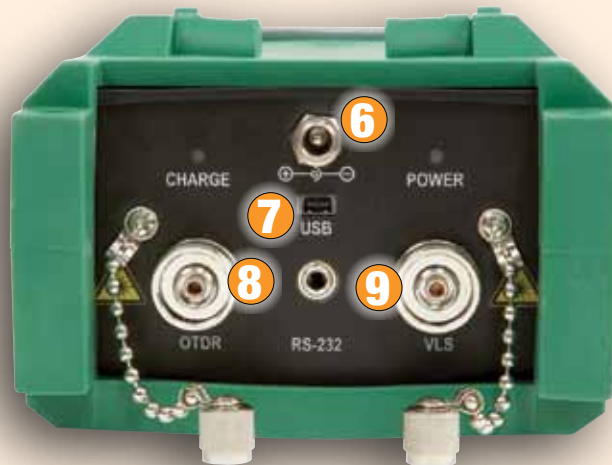
Cable Acceptance Testing and Fault Locating

Greenlee's 920XC is a handheld, full-featured OTDR for cable acceptance testing and fault locating. The Autotest function automatically chooses the optimal measurement settings, scans the fiber under test and performs fiber analysis displaying length of fiber and the loss of each event in an easy-to-read table. Also available is the graphical user interface to navigate the trace signature for more detailed views of specific fiber events.

The 920XC series OTDR is indispensable and the ideal tool that all telecom service providers, CATV technicians and contractors need in their toolbox. The 920XC series handheld OTDR is designed for enhanced user convenience with its large color LCD display and graphical user interface. The user can activate the measurements function easily by the press of one button.

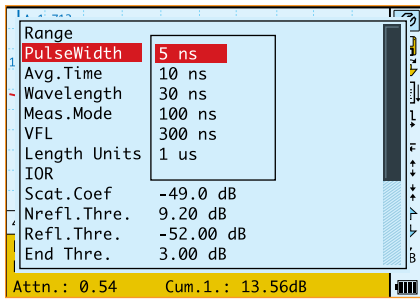
Features

- Economical
- Compact handheld design
- Easy to use
- Fast automated testing
- 38dB dynamic range
- Large backlit LCD display
- Measure length and defects of coiled fiber
- Fiber analysis software for data management and report generation
- RS-232/USB interface
- NiMH batteries for 8 hours of continuous use
- Live fiber testing at 1625nm (920XC-30F only).



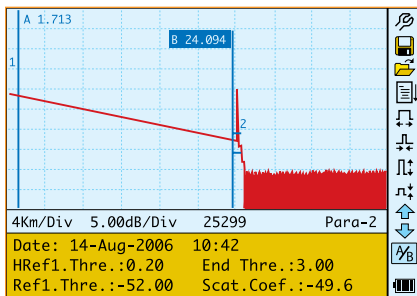
1. Protective rubber boot
2. Menu Functions for settings and trace store/recall.
3. Large color LCD display
4. Run/Stop button to automatically choose settings and run OTDR test.
5. Sealed membrane panel
6. DC charger port
7. USB port for data transfer.
8. OTDR port with dust cover.
9. Visual fault locator port with dust cover (920XC-20C only).

OTDR Operation Modes



Instrument Setup

- Auto mode selects optimal distance range and pulsewidth
- All settings are selected through easy to use menu selections
- Short pulsewidth (5ns) available for high-resolution measurements
- Color and high intensity monochrome settings for bright sunlight conditions
- Complete control of fiber analysis settings for auto measurement of splice and end of fiber



OTDR Trace

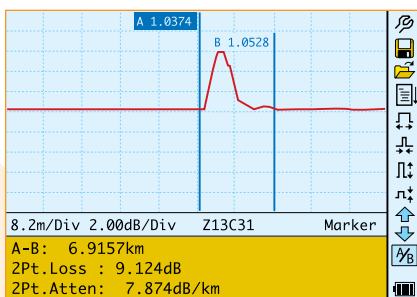
- View and measure test results
- One button measurement of all distance and loss information

Event View Mode – user can page through each loss event for location (in meters/miles and feet) and loss in dB

Manual Measurement Mode – user can perform manual measurement with A and B cursor for distance, loss and reflectance measurements

Measurement Setup – user can view settings used to acquire measurement

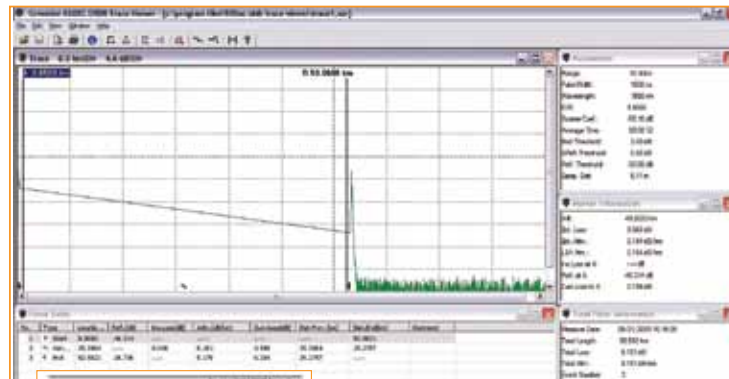
Fiber Analysis Software – user can view settings used for auto measurement of events



Hi-Resolution Event Viewing

- Easy to view and measure in high-resolution mode
- One button to jump to high-resolution view
- One button jump back to entire trace view
- 0.1 meter sampling resolution
- Active cursor snaps to the next event in the fiber analysis table

OTDR Cable Acceptance Report Generation



OTDR Trace Viewer

- View and measure all trace files stored on the 920XC
- Bellcore Standard OTDR Report (SOR) file storage format
- Display trace, fiber events and measurement information on single screen
- Display measurement settings used to acquire trace

Cable Acceptance Report

- Generate professional OTDR cable acceptance reports
- Cable acceptance report can be customized by user
- Trace signature and fiber events are printed on each report

Specifications

MODEL	920XC-20C	920XC-30F	920XC-30P
Wavelength (± 20nm)	1310/1550	1310/1550/1625	1310/1490/1550
Dynamic Range (dB)	35	38/37/37	38/37/37
Event Deadzone (m)	2.5	1.5	2.5
Attenuation Deadzone (m)	14	10	14
Emitter Type	Laser		
Pulsewidth	5, 10, 30, 100, 300, 1us, 2.5us, 10us, 20us		
Selectable Ranges (km)	0.3, 1.3, 2.5, 5, 10, 20, 40, 80, 120, 160, 240		
Average Time	15s/30s/1 min/2 min/3 min		
Distance Measurement	±(1m + 5 X 10 ⁵ x distance + sampling space)		
Accuracy			
Connector Type	PC or APC (interchangeable FC, SC, ST)		
VISUAL FAULT LOCATOR			
Wavelength	650nm	N/A	N/A
Peak Power Output	3 mW	N/A	N/A
Connector Interface	(interchangeable FC, SC, ST)	N/A	N/A
FIBER ANALYSIS SOFTWARE			
Reflection Detect Accuracy	±4 dB		
Attenuation Detect Accuracy	±0.05 dB/dB		
Measurement Data Storage	1,000 test curves		
Data Transmission	RS-232/USB port		
GENERAL			
Power Supply	NiMH chargeable battery/AC adapter		
Battery Life	Support over 8 hours operating on one charge or over 20 hours standby		
Operating Temperature	-10° to 50° C		
Storage Temperature	-20° to 60° C		
Relative Humidity	0 to 95% (non-condensing)		
Weight	1.9 lbs. (0.87 kg)		
Dimensions	7.7" H x 3.9" W x 2.4" L (196mm x 100mm x 64mm)		

Ordering Information

R REPLACEMENT PART **A** = ACCESSORY

CAT NUMBER	UPC NUMBER	DESCRIPTION	QTY
Dual Wavelength Single Mode OTDR			
920XC-20C UPC FC	89872	Handheld OTDR, 1310/1550nm, FC/UPC	1
920XC-20C UPC SC	89882	Handheld OTDR, 1310/1550nm, SC/UPC	1
920XC-20C UPC ST	89877	Handheld OTDR, 1310/1550nm, ST/UPC	1
920XC-20C APC FC	89887	Handheld OTDR, 1310/1550nm, FC/APC	1
920XC-20C APC SC	89892	Handheld OTDR, 1310/1550nm, SC/APC	1
Triple Wavelength Single Mode OTDR			
920XC-30P UPC FC	19238	Handheld OTDR, 1310/1490/1550nm, FC/UPC	1
920XC-30P UPC SC	19237	Handheld OTDR, 1310/1490/1550nm, SC/UPC	1
920XC-30P UPC ST	19239	Handheld OTDR, 1310/1490/1550nm, ST/UPC	1
920XC-30P APC FC	19252	Handheld OTDR, 1310/1490/1550nm, FC/APC	1
920XC-30P APC SC	19240	Handheld OTDR, 1310/1490/1550nm, SC/APC	1
Triple Wavelength Single Mode Filtered OTDRs			
920XC-30F UPC FC	19248	Handheld OTDR, 1310/1550/1625nm, FC/UPC	1
920XC-30F UPC SC	19247	Handheld OTDR, 1310/1550/1625nm, SC/UPC	1
920XC-30F UPC ST	19251	Handheld OTDR, 1310/1550/1625nm, ST/UPC	1
920XC-30F APC FC	19250	Handheld OTDR, 1310/1550/1625nm, FC/APC	1
920XC-30F APC SC	19249	Handheld OTDR, 1310/1550/1625nm, SC/APC	1
Accessories			
AG-ADPT-20-UNI	25691	R Universal Power Supply	1
AG-CONN-FC-L2	20996	A FC Connector (For UPC & APC)	1
AG-CONN-SC-L2	20998	A SC Connector (For UPC & APC)	1
AG-CONN-ST-L2	20997	A ST Connector (For UPC Only)	1
1155-0526	10582	R Vehicle Adapter (6FT, 5.5 OD, 2.1M)	1
20988	20988	R Soft Carry Case	1
20989	20989	R USB Cable For OTDR	1
20990	20990	R RS-232 Cable	1
20999	20999	R NiMH Battery (9.6V)	1
25693	25693	A Serial Cable to USB	1
920XC-QR	25692	R 920XC Quick Reference Guide	1
946	60571	A Cleaning Wand (10/PK)	1
948	60692	A ReelCleaner™ Connector Cleaning System	1



CONTENTS OF EACH MODEL NUMBER

Instrument including rechargeable battery, OTDR Trace Viewer software, installation disk, Data transfer cable, AC adapter, protective cover, carrying case, warranty card, CE/FCC certificate, certificate of calibration. Default language is English and Spanish. Alternate languages of Russian, Portuguese, and German available upon request.



www.greenlee.com • MA-5413 07/10

4455 Boeing Drive • Rockford, IL 61109-2988 • USA • 815-397-7070

©2010 Greenlee Textron Inc. • Printed in USA

Greenlee Textron Inc. is a subsidiary of Textron Inc.