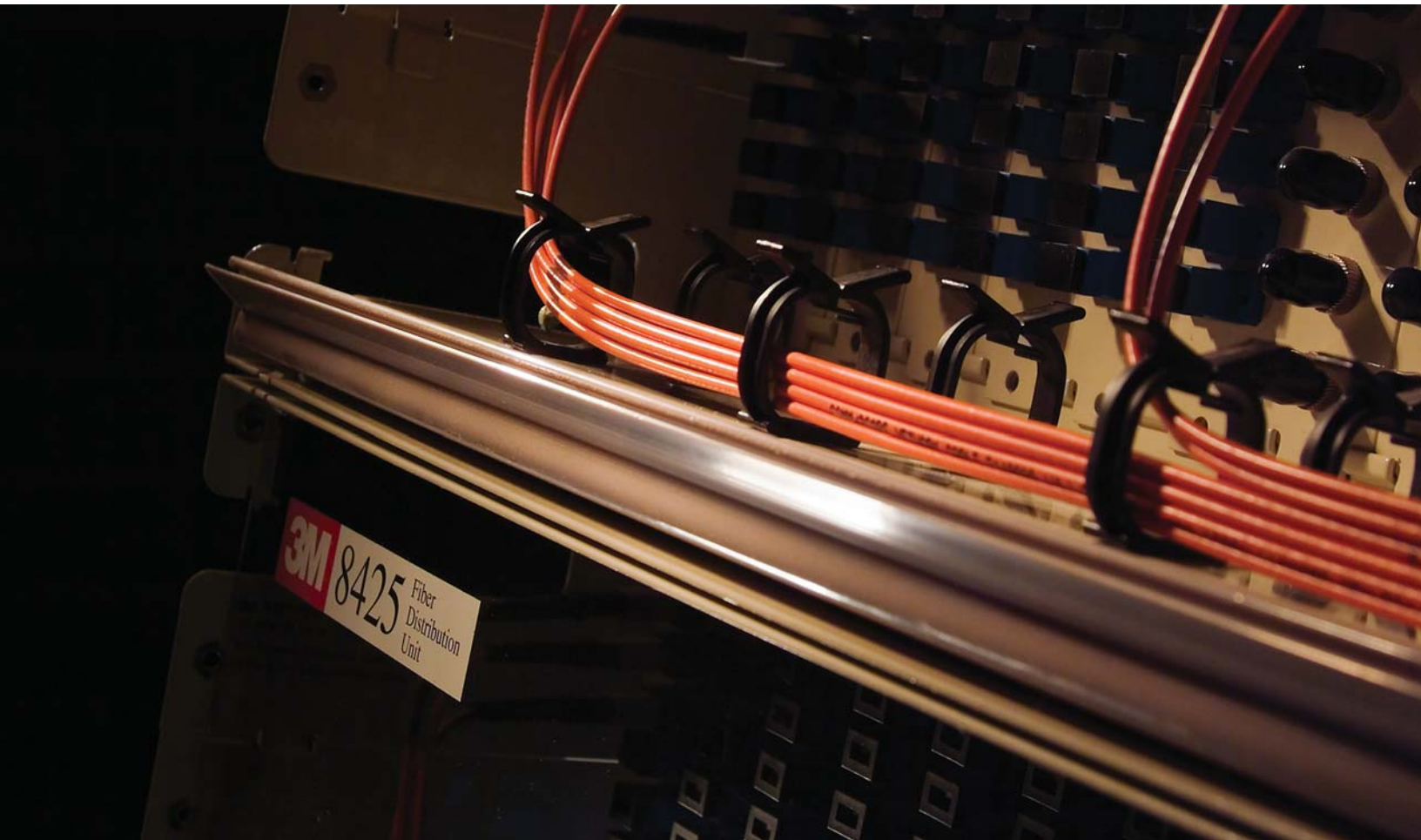




# Fiber Distribution System 8400 Series



Cable Management System for  
Fiber Optic Termination and Organization

## FLEXIBLE OPTIONS TO MEET GROWING NEEDS IN LIMITED SPACES.

Faster data and increased bandwidth places greater demands upon fiber optic networks, but within a limited physical space. The 3M™ Fiber Distribution System 8400 Series is a flexible, compact solution with options for customization and growth.

The 8400 series fiber distribution system consists of four individual fiber distribution units (FDUs), plus a broad range of coupling plates and fiber cable management components. The FDUs are designed to provide cross-connect and interconnect between incoming fiber distribution cables and fiber optic equipment. The system provides choices for rack- or wall-mount applications using a common set of coupling plates. The plates are available in common connector styles, singlemode and multimode, both simplex and duplex. All components are galvanized steel with baked powder-coated epoxy paint.



3M™ Rack Mount Fiber Distribution Unit 8425 Series

### 3M™ RACK MOUNT FIBER OPTIC PATCH PANEL 8423

The 8423 patch panel is designed to provide a low-profile compact solution for termination of up to 24 optical fibers. At less than 44.4mm (1.75"), the panel fits easily into one unit of rack space. The addition of the 8423-EXP panel upgrades the unit to 48 ports in two units of rack space. The panel is mounted on glides that permit front access, drawer-like movement within the rack. The units offer networking and fiber distribution from the vault or wiring closet to the user's terminal equipment.



3M™ Rack Mount Fiber Optic Patch Panel 8423

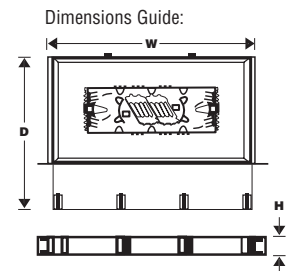
The front of the panel forms a shelf, providing physical protection for the connectors and routing options for the patch cords. Designed for 19" rack mounting, the 8423 panel may be easily adapted to 23" rack mounting with the addition of two 8423-BKT brackets.

### FEATURES AND BENEFITS

24 ports within one unit of rack space	Conserves space
Glide mounting system	Provides easy front access to rear compartment and jumpers
Adjustable stops in glides	Allows positive stops for flush or mid-mount applications
Assortment of modular coupling plates	Many connector styles cover all applications
Pre-assembled coupling plates	Saves time
Grommeted cable entry	Can reduce rear dust entry/physical protection of cable
No tools needed to re-enter rear compartment	Rapid access
Powder-coated baked epoxy on galvanized steel construction	Rugged and durable

### ORDERING INFORMATION

PRODUCT NUMBER	DIMENSIONS (H X W X D) CM (IN.)*	CAPACITY PLATES (TRAYS)	PKG (LBS.)	MIN. ORDER	UPC 051138-
8423	4.1 x 42.5 x 33 (1.6 x 16.7 x 13)	3 (2)	1 each (8.00)	1	58271
8423-BKT	4.3 x 7.2 (1.7 x 2.8)	-	1 each (0.50)	1	58273
8423-EXP	4.1 x 42.5 x 23 (1.6 x 16.7 x 9)	3 (2)	1 each (3.00)	1	58272
<b>OPTIONAL SPLICE TRAY AND ACCESSORIES</b>					
2522 TRAY	14.9 x 4.3 x 0.65 (37.8 x 10.9 x 1.6)	12 splices 2 inserts	1.8 (0.8)	3/cs	3 each
2521-F FUSION SPLICE INSERT	N/A	6 splices	0.6 (0.3)	2/pkg.	12 pkg.
2522-FL FIBRLOK™ SPLICE INSERT	N/A	6 splices	0.6 (0.3)	2/pkg.	12 pkg.
*See illustration					

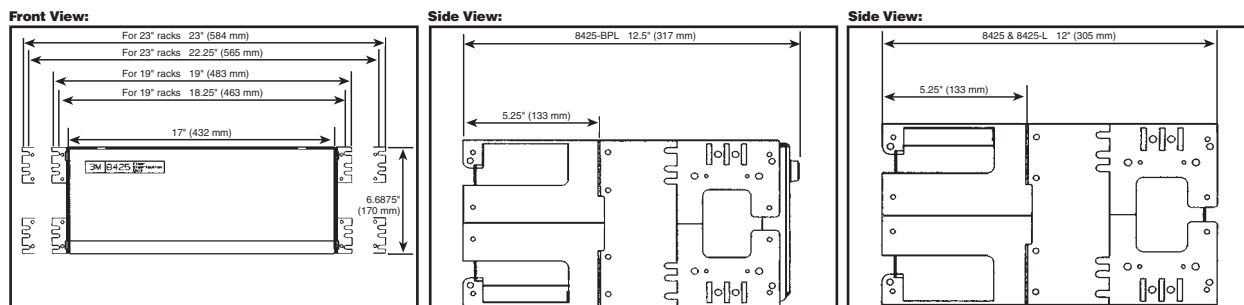


## 3M™ RACK MOUNT FIBER DISTRIBUTION UNIT 8425 SERIES

- 8425 – Rack Mount FDU, 4-U height, maximum capacity of 144 ports.
- 8425-L – The 8425 FDU with lockable front and rear panels. Two keys included.
- 8425-BPL – The 8425 FDU with extended back panel which can accommodate up to three each 3M™ Splice Trays 2524 to hold up to a maximum of 72 mechanical or fusion splices. Unit shipped with one tray. Order additional trays as required. Both front and back panels are lockable. Two keys included.



3M™ Rack Mount Fiber Distribution Unit 8425 Series



## FEATURES AND BENEFITS

Modular construction	Flexible upgrades, customized applications, future expansion
Assortment of coupling plates	Available with all major coupling styles and counts
Integral splice capability	Simplifies installation, less hardware required
Lockable doors (8425-L and 8425-BPL)	Added protection and security
Front and rear doors recessed (8425 and 8425-L)	No protruding parts to snag fibers
Wide rear floor – full 43.2 cm (17")	Wide area for routing and storage of fiber
Generous side entry ports	Allows for easy cable entry from any direction
Chassis-mounted cable strain relief and ground lug location	Allows easy use of cable clamps or cable ties
7.6 cm (3") or greater bend diameter throughout	Minimizes macrobending
48.3 cm (19") or 58.4 cm (23") rack	Flexible mounting
Self-contained splicing unit	All activities performed in same unit, saves space and minimizes expense
Powder-coated baked epoxy on galvanized steel	Rugged and durable

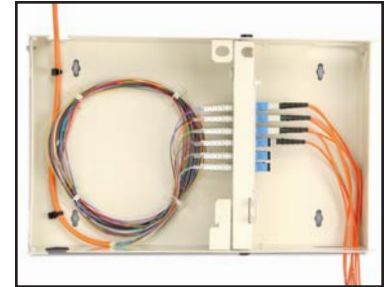
## ORDERING INFORMATION

PRODUCT NUMBER	DIMENSIONS (H X W X D) CM (IN.)	WEIGHT KG (LBS.)	PKG	MIN. ORDER	UPC 051138-
8425	17.7 x 43.1 x 30.4 (7 x 17 x 12)	8.1 (18)	1 each	1	36618
8425-L	17.7 x 43.1 x 30.4 (7 x 17 x 12)	8.3 (18.5)	1 each	1	36619
8423-BPL	17.7 x 43.1 x 31.8 (7 x 17 x 12.5)	9.2 (20.5)	1 each	1	36640

### 3M™ WALL MOUNT FIBER OPTIC PATCH PANEL 8430 SERIES

The 8430 series patch panel brings the features of our rack-mounted 8400 system to your wall-mounted building entrance and LAN applications. Available in three sizes, these units provide excellent cable management in low to medium fiber count installations.

The 8430 series panels offer efficient use of space, as well as functionality and rugged durability. The units are secure enough for mounting in high-traffic areas and their attractive, low-profile design makes them acceptable for installation anywhere in your facility.



3M™ Wall Mount Fiber Optic Patch Panel 8432

The cabinets have two separate lockable compartments and can be mounted to permit cable entry on either side. The unique swivel partition between the two chambers provides easy access to all couplings.

- The 8432 panel is configured for 12-port capacity and can be expanded to accommodate two plates of 6 or 8 couplings each.
- The 8434 panel is configured for 24-port capacity and can be expanded to accommodate four plates of 6 or 8 couplings each.
- The 8436 panel is configured for 36-port capacity and can be expanded to accommodate six plates of 6 or 8 couplings each.

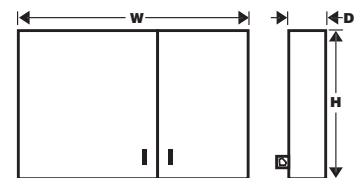


3M™ Wall Mount Fiber Optic Patch Panel 8432, 8434, and 8436

### FEATURES AND BENEFITS

Separate lockable compartments	Provides demarcation point between customer and service
Assortment of modular coupling plates	Available in all major connector styles
Pre-assembled coupling plates	Saves time
Swivel partition	Easier access to couplings
Invertible housing	Allows left or right, bottom or top cable entry
Grommeted cable and jumper openings	Can reduce dust entry/physical protection of jumpers
Cable ports open to outer edge	Permits pass through of express fibers
Easily removable doors	Accessibility during installation
Powder-painted baked epoxy on galvanized steel	Rugged and durable

Dimensions Guide:



### ORDERING INFORMATION

PRODUCT NUMBER	DIMENSIONS (H X W X D) CM (IN.)*	CAPACITY	PKG (LBS.)	MIN. ORDER	UPC 051138-
8432	23.4 x 38.6 x 8.1 (9.2 x 15.2 x 3.2)	2 plates for 12 or 16 ports	1 each (9.00)	1	58056
8434	28.5 x 38.6 x 8.1 (11.2 x 15.2 x 3.2)	4 plates for 24 or 32 ports	1 each (10.00)	1	58057
8436	45.7 x 38.6 x 8.1 (18.0 x 15.2 x 3.2)	6 plates for 36 or 48 ports	1 each (15.00)	1	58058

\*See illustration

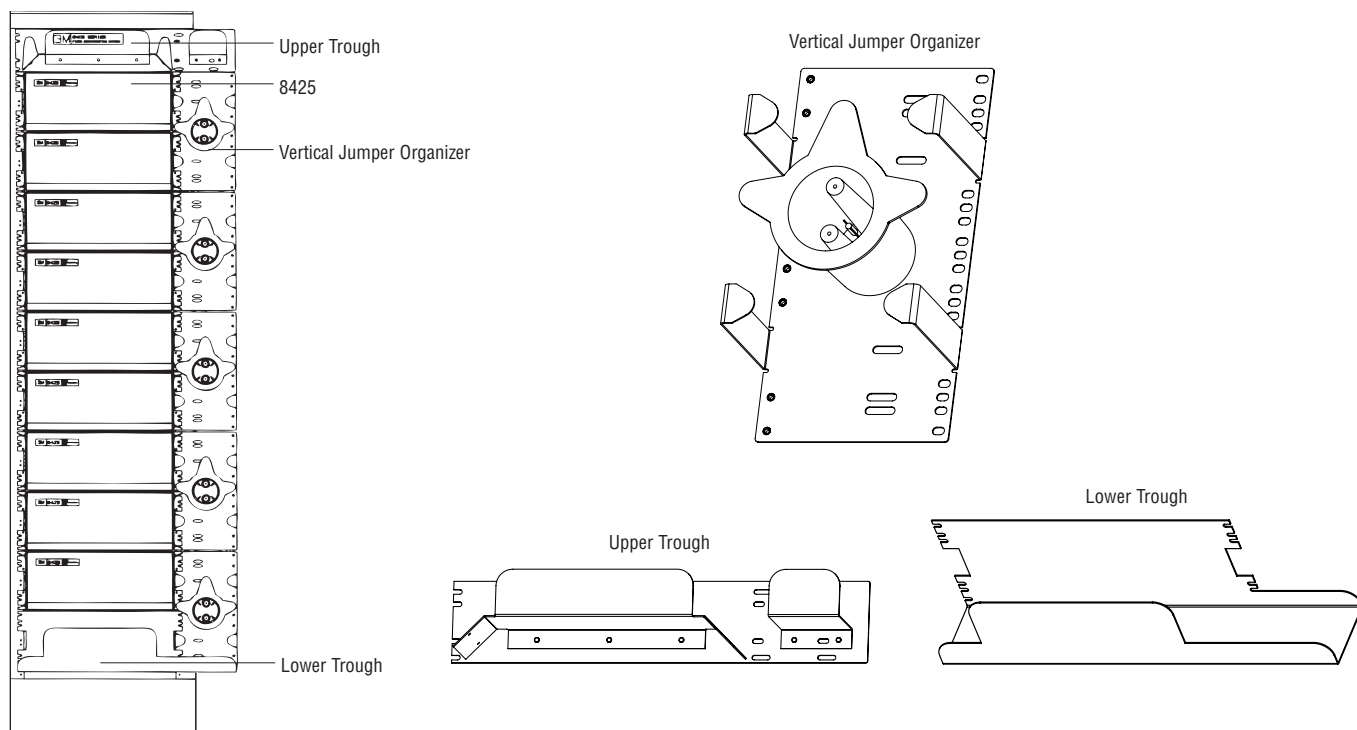
### 3M™ FIBER MANAGEMENT SYSTEM 8470

The 8470 fiber management system includes one upper and one lower horizontal fiber trough, as well as five vertical fiber organizers. Components fit all telco and EIA standard 19" and 23" racks. All components are designed to provide minimum bend radii and organization of optical fiber patch cords. The 8470 system includes 5 vertical organizers, 1 upper horizontal fiber trough and 1 lower horizontal trough.

### 3M™ VERTICAL JUMPER ORGANIZER 8475

The 8475 vertical jumper organizer includes five vertical fiber organizers. It is used when jumping between equipment racks only. Components also fit all telco and EIA standard 19" and 23" racks. The 8475 organizer includes 5 vertical organizers.

#### Fiber Management System



### ORDERING INFORMATION

PRODUCT NUMBER	DESCRIPTION	DIMENSIONS (H X W X D) CM (IN.)	WEIGHT KG (LBS.)	PKG (LBS.)	MIN. ORDER	UPC 051138-
8470	Fiber management system		13.1 (29)	1 each (39.00)	1pkg	36641
	Upper trough	12.7 x 64.3 x 12.2 (5.0 x 25.3 x 4.8)				
	Lower trough	16.5 x 64.3 x 12.2 (6.5 x 25.3 x 4.8)				
8475	Vertical jumper organizer	35.1 x 18.0 x 12.2 (13.8 x 7.1 x 4.8)	6.8 (15)	1 each (27.00)	1pkg	36642



## ORDERING INFORMATION

3M™ COUPLING PLATE 8400 SERIES						
PRODUCT NUMBER	DESCRIPTION	DIMENSIONS (H X W) CM (IN.)	WEIGHT GM (OZ.)	PKG. (LBS.)	MIN. ORDER	UPC 051138-
8406-TS	Plate, 6 port ST SM w/couplings	13 x 3 (5.1 x 1.2)	85.1 (3.0)	4 each (0.03)	4 each	36621
8406-TM	Plate, 6 port ST MM w/couplings	13 x 3 (5.1 x 1.2)	85.1 (3.0)	4 each (0.40)	4 each	57527
8408-TS	Plate, 8 port ST SM w/couplings	13 x 3 (5.1 x 1.2)	99.2 (3.5)	3 each (0.03)	3 each	36623
8408-TM	Plate, 8 port ST MM w/couplings	13 x 3 (5.1 x 1.2)	99.2 (3.5)	3 each (0.03)	3 each	57528
8412-TM	Plate, 12 port, ST MM w/couplings	13 x 3 (5.1 x 1.2)	127.6 (4.5)	1 each (0.03)	1 each	57414*
8412-TS	Plate, 12 port, ST SM w/couplings	13 x 3 (5.1 x 1.2)	127.6 (4.5)	1 each (0.03)	1 each	57415*
8406-CS	Plate, 6 port SC SM w/couplings	13 x 3 (5.1 x 1.2)	85.1 (3.0)	4 each (0.03)	4 each	57411
8406-CSA	Plate, 6 port SC SM angle polish w/couplings	13 x 3 (5.1 x 1.2)	85.1 (3.0)	4 each (0.03)	4 each	57434
8406-CM	Plate, 6 port SC MM w/couplings	13 x 3 (5.1 x 1.2)	99.2 (3.5)	4 each (0.03)	4 each	57410
8406-DCM	Plate, 6 port, duplex, SC MM w/couplings	13 x 3 (5.1 x 1.2)	85.1 (3.0)	4 each (0.03)	4 each	58061*
8408-CS	Plate, 8 port SC SM w/couplings	13 x 3 (5.1 x 1.2)	99.2 (3.5)	3 each (0.17)	3 each	57413
8408-CSA	Plate, 8 port SC SM angle polish w/couplings	13 x 3 (5.1 x 1.2)	99.2 (3.5)	3 each (0.03)	3 each	57435
8408-CM	Plate, 8 port SC MM w/couplings	13 x 3 (5.1 x 1.2)	99.2 (3.5)	3 each (0.03)	3 each	57412
8408-DCM	Plate, 8 port, SC MM, duplex w/couplings	13 x 3 (5.1 x 1.2)	85.1 (3.0)	3 each (0.03)	3 each	58062*
8412-DCM	Plate, 12 port, SC MM, duplex w/couplings	13 x 3 (5.1 x 1.2)	127.6 (4.5)	1 each (0.03)	1 each	57409*
8412-DCS	Plate, 12 port, SC SM, duplex w/couplings	13 x 3 (5.1 x 1.2)	127.6 (4.5)	1 each (0.03)	1 each	57418*
8406-FS	Plate, 6 port FC SM w/couplings	13 x 3 (5.1 x 1.2)	85.1 (3.0)	4 each (0.03)	4 each	36625
8406-FSA/2.15	Plate, 6 port, FC SM, angle polish w/couplings	13 x 3 (5.1 x 1.2)	85.1 (3.0)	4 each (0.03)	4 each	58038*
8408-FS	Plate, 8 port FC SM w/couplings	13 x 3 (5.1 x 1.2)	99.2 (3.5)	3 each (0.14)	3 each	36627
8412-DLM	Plate, 12 port LC, MM duplex with couplings	13 x 3 (5.1 x 1.2)	—	4 each	4 each	19048**
8412-DLS	Plate, 12 port LC, SM duplex with couplings	13 x 3 (5.1 x 1.2)	—	4 each	4 each	19049**
8499-1W	Single position blank plate	13 x 3 (5.1 x 1.2)	28.4 (1.5)	12 each (0.40)	12 each	57416

ST Plates

SC Plates

FC Plates  
LC Plates

NOTE: All coupling plates loaded with specified 3M couplings.

SM=Singlemode MM=Multimode

\*UPC prefix 054007-

\*\*UPC prefix 051115-

3M is a trademark of 3M Company.

#### **Important Notice**

All statements, technical information, and recommendations related to 3M's products are based on information believed to be reliable, but the accuracy or completeness is not guaranteed. Before using this product, you must evaluate it and determine if it is suitable for your intended application. You assume all risks and liability associated with such use. Any statements related to the product which are not contained in 3M's current publications, or any contrary statements contained on your purchase order shall have no force or effect unless expressly agreed upon, in writing, by an authorized officer of 3M.

#### **Warranty; Limited Remedy; Limited Liability.**

This product will be free from defects in material and manufacture for a period of 12 months from the date of purchase. **3M MAKES NO OTHER WARRANTIES INCLUDING, BUT NOT LIMITED TO, ANY IMPLIED WARRANTY OF MERCHANTABILITY OR FITNESS FOR A PARTICULAR PURPOSE.** If this product is defective within the warranty period stated above, your exclusive remedy shall be, at 3M's option, to replace or repair the 3M product or refund the purchase price of the 3M product. Except where prohibited by law, 3M will not be liable for any loss or damage arising from this 3M product, whether direct, indirect, special, incidental or consequential regardless of the legal theory asserted.



**Communication Markets Division  
3M Telecommunications**

6801 River Place Blvd.  
Austin, TX 78726-9000  
800/426 8688  
Fax 800/626 0329  
[www.3MTelecommunications.com](http://www.3MTelecommunications.com)



*10% Post-consumer waste paper*

Litho in USA.

© 3M 2006 80-6113-1513-8